

# LANDSCAPE and PLACE

## 3<sup>rd</sup> Year Drawing 2020



Nawarla Gabarnmang, Arnhem Land, Northern Territory



From the exhibition 'Yirrkala Drawings', Art Gallery of NSW , 2013

**Bangaliwuy Marrawungu / *Bunhangura towards Dhuwalkitj* 1947**

Lumber crayon on butchers' paper / Ronald M and Catherine H  
Berndt Collection, Berndt Museum of Anthropology, University of  
Western Australia, Perth



Wall of Livia, a fresco from a Roman villa c.39 BC



Beatus Mappa Mundi - 8<sup>th</sup> century Spain



Girona Mappa Mundi

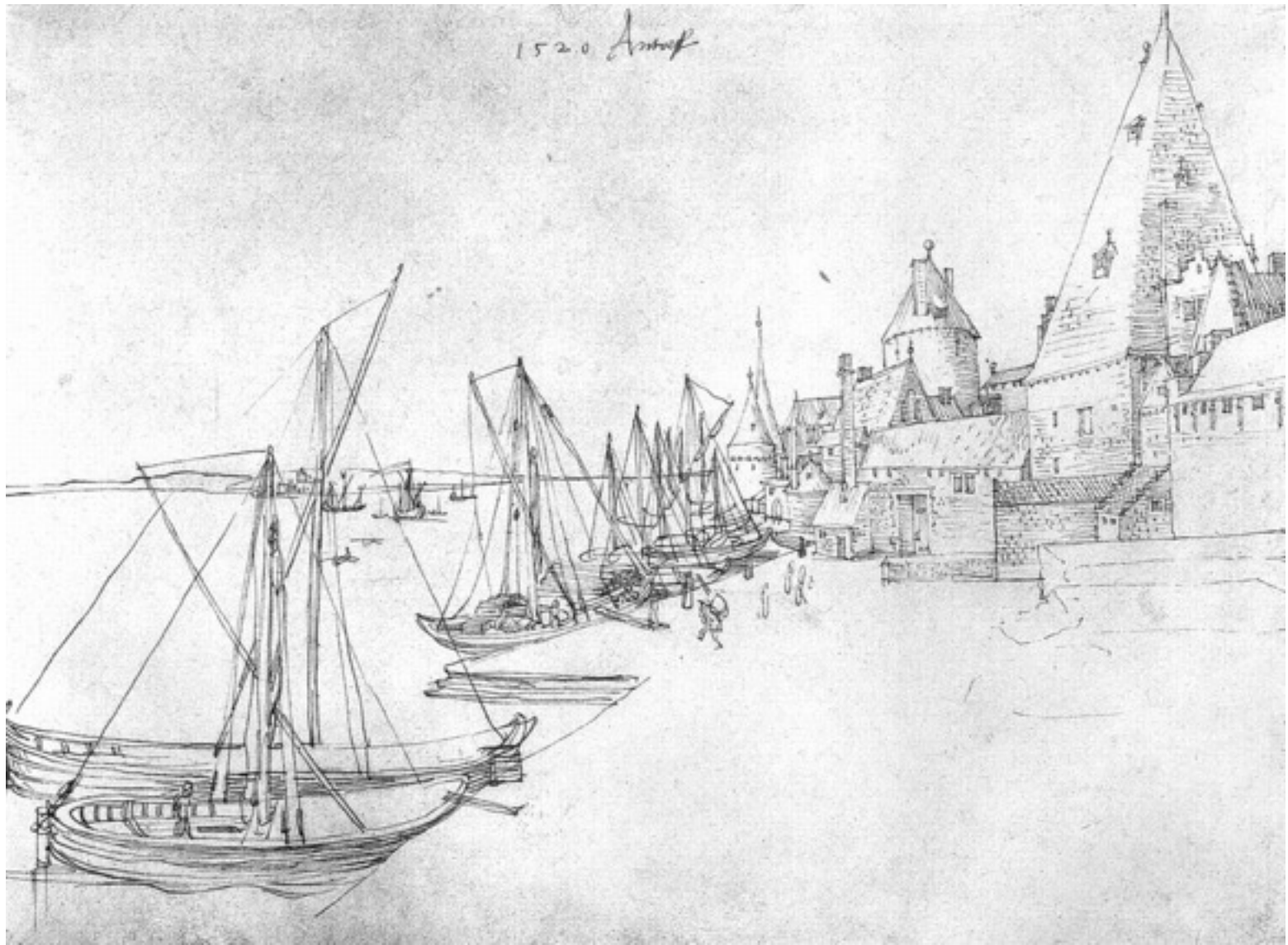


Map of Tuscany and the Chiana Valley, 1503-04  
**Leonardo da Vinci**



Map of the town of Imola, 1502





Albrecht Dürer, *The port of Antwerp*, pen drawing, 1520



Pieter Breughel the elder, 'Alpine Landscape' 1553  
Ink on paper, 23.6 x 34.3cm



Philips de Koninck, 'Sheds by the Water' 1660 - 65



Rembrandt (1606 -1669) - ink sketches



**Claude Lorraine**

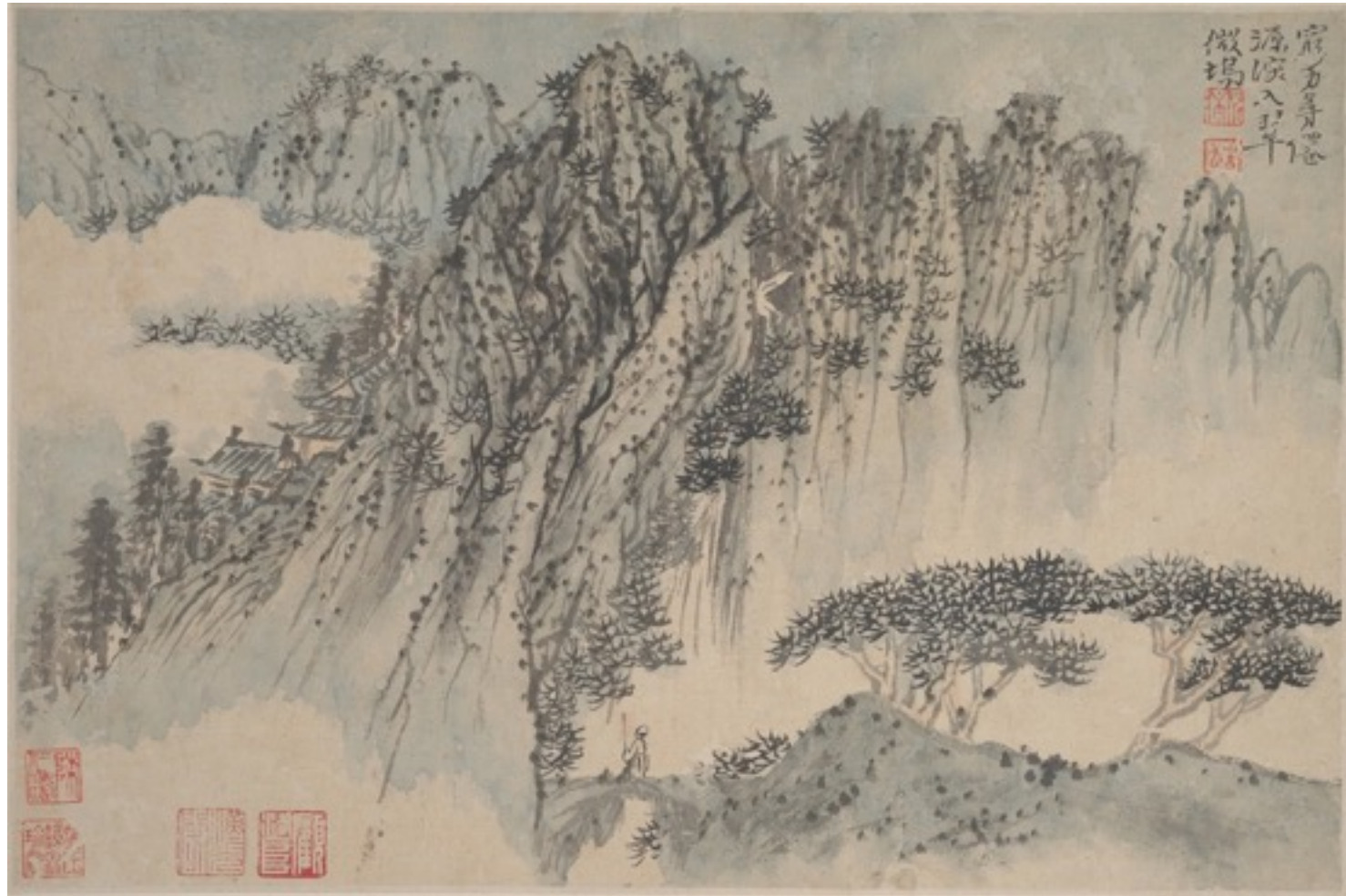
**'Floodplain with watering place' 1640**

Guo Xi, 'Early Spring'  
ca.1020 - 1090  
Song Dynasty





Bada Shenren (1626 - 1705)  
Ming Dynasty

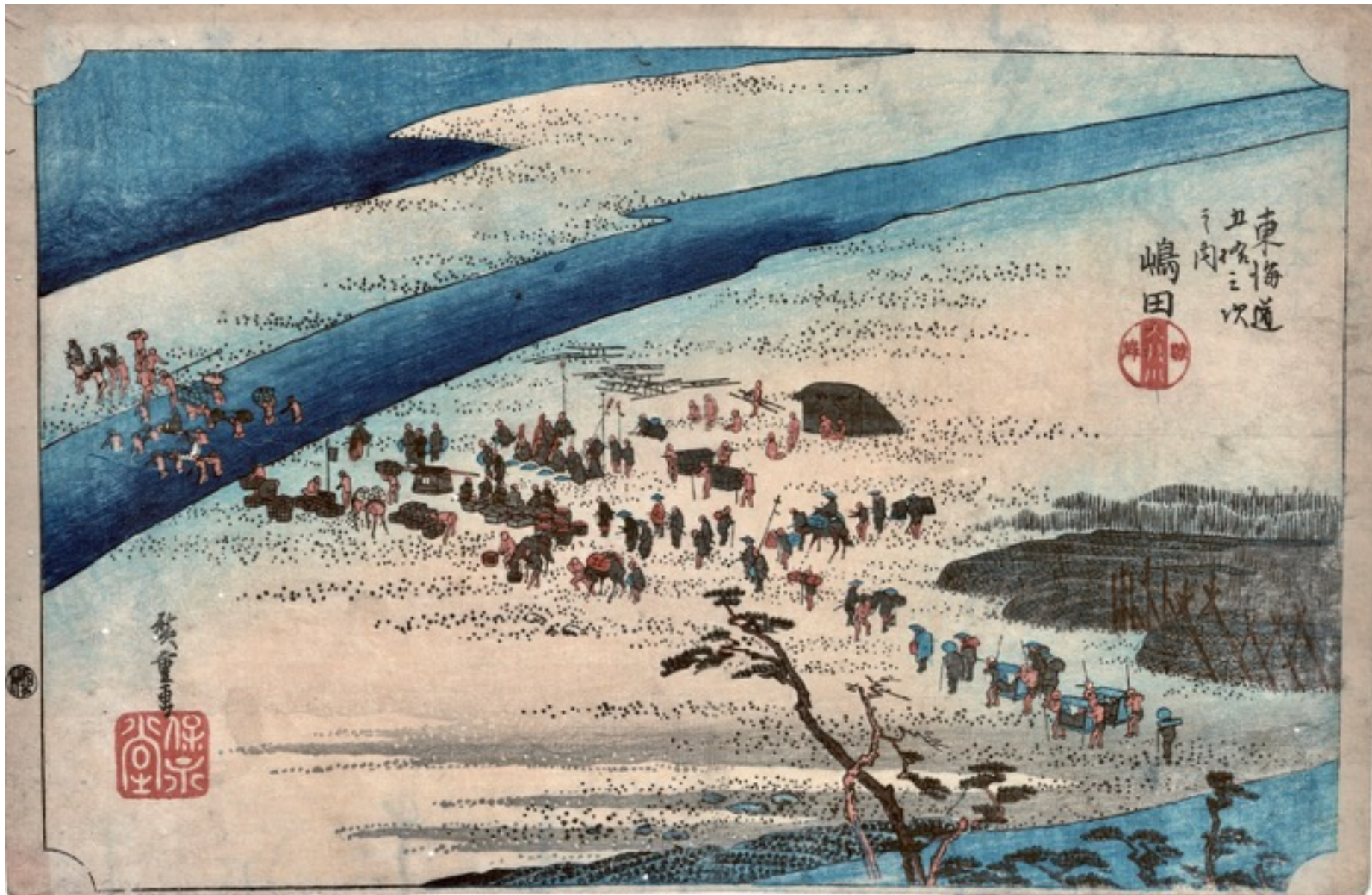


Shi Tao (1622 - 1707) Qing dynasty  
*i-hua*: 'all-inclusive creative painting'





Hokusai (1760 -1849) 'Mt Fuji' woodblock print



Hiroshige (1797 - 1858) from '53 Stations of the Tokaido Road'



Samuel Palmer, 'The Valley Thick with Corn' 1825

Pen and dark brown ink with brush in sepia mixed with gum; varnished, 18.2 x 27.5 cm



Alexander Cozens (1717 - 86) watercolour blot drawings



J.M.W. Turner 'The scarlet sunset' 1830-40  
watercolour and gouache on paper



Van Gogh, 'The Crau seen from Montmajour', 1888, ink on paper, 49 x 61 cm



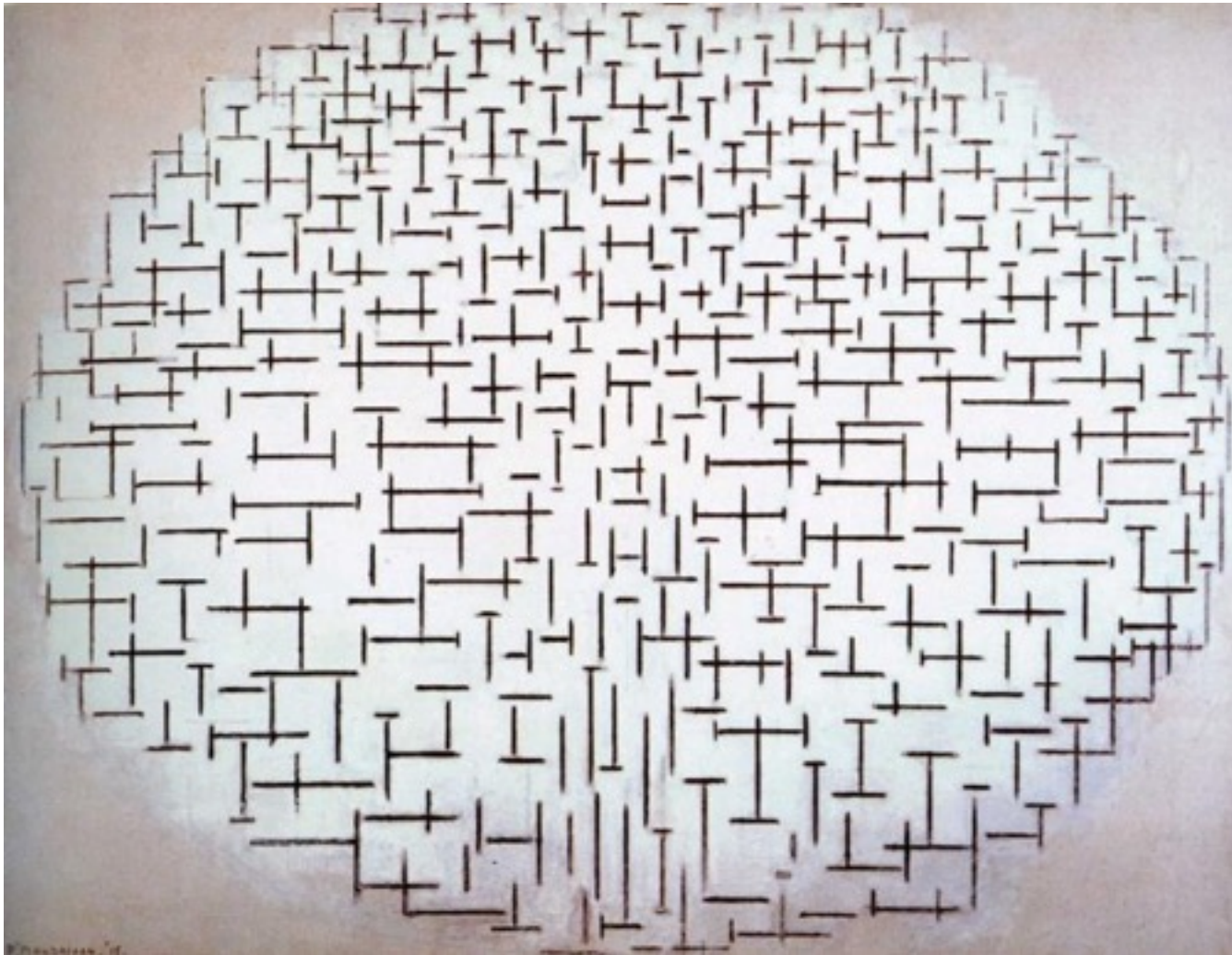
Edouard Vuillard, "Rideau d'arbres", 1932-38, pastel on paper



Cézanne, 'House among trees' ca.1900, pencil and watercolour



Piet Mondriaan  
'Composition No.10, Pier and ocean'  
1915'





Fred Williams



Alfred Wallis



Giorgio Morandi, watercolour



Joan Mitchell, Untitled sketchbook drawing, 1967



Richard Diebenkorn,  
'View from studio, Ocean Park'  
1969  
Gouache, charcoal, ink on paper  
43.2 × 34.9 cm

Richard Diebenkorn









Vija Celmins, *Untitled (Big Sea #2)*, 1969  
pencil on paper

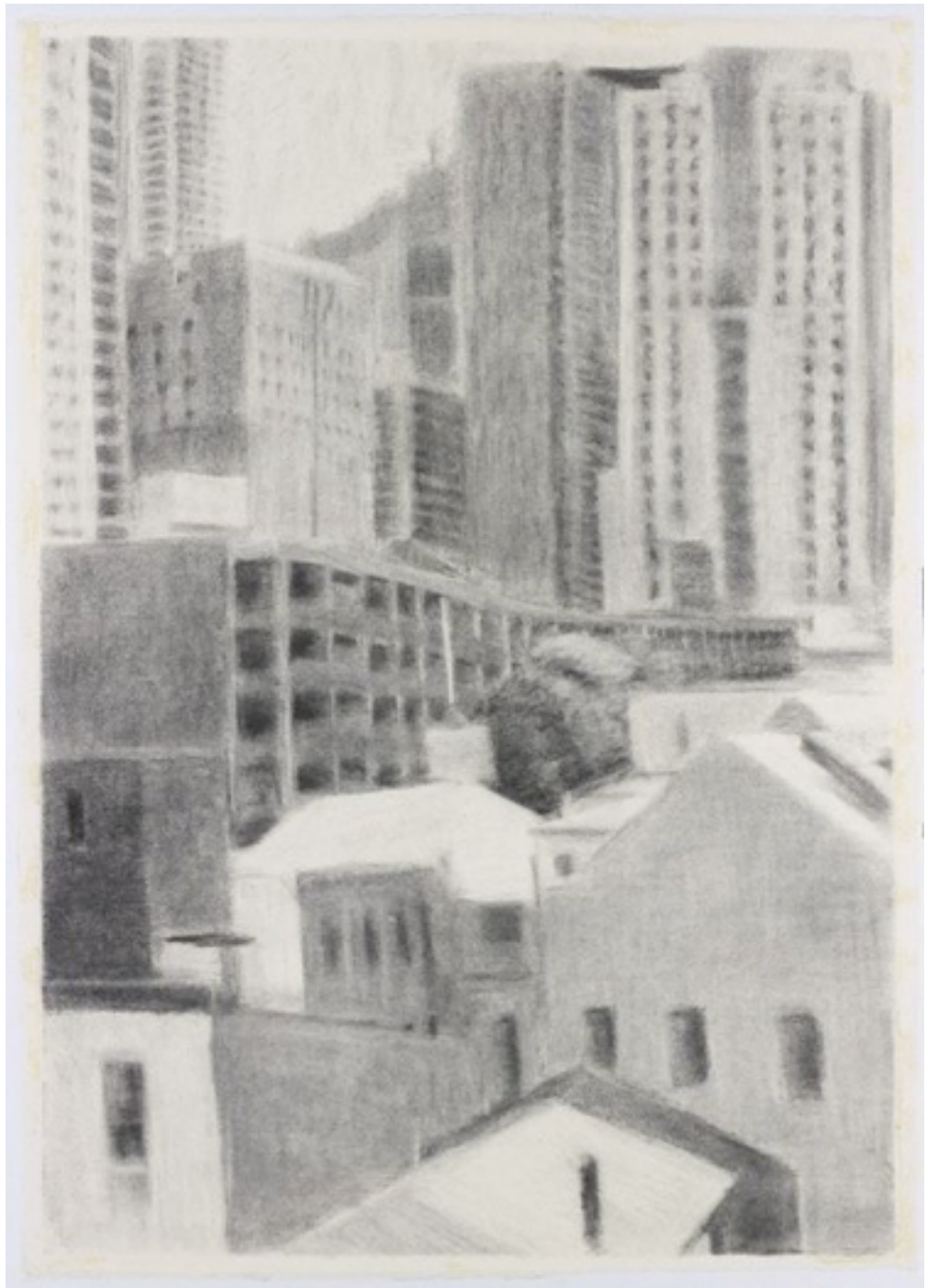


Wayne Thiebaud  
*City and Streets*, 1995  
pastel, charcoal and graphite on paper  
22 x 11 ½ in. (55.9 x 29.2 cm.)



Rackstraw Downes, 'Under the Gowanus with sanitation Department Towers' 1999  
Graphite on paper,

Sallie Moffat  
Urbanscape 2, 2000  
charcoal on paper





Mary Tonkin, 'Rocky outcrop, Werribee Gorge' 2002  
charcoal, collaged patches of paper with corrections on ten joined sheets of Velin Arches paper  
225 x 460 cm



Kevin Connor, 'Pyrmont and city' 1993, brush and black ink, white gouache on thick white wove paper



Idris Murphy - pencil drawing and etching



Ken Whisson  
“Vivid recollections of Australia no. 1. Flying out of Sydney”,  
1979, pen and ink, pencil

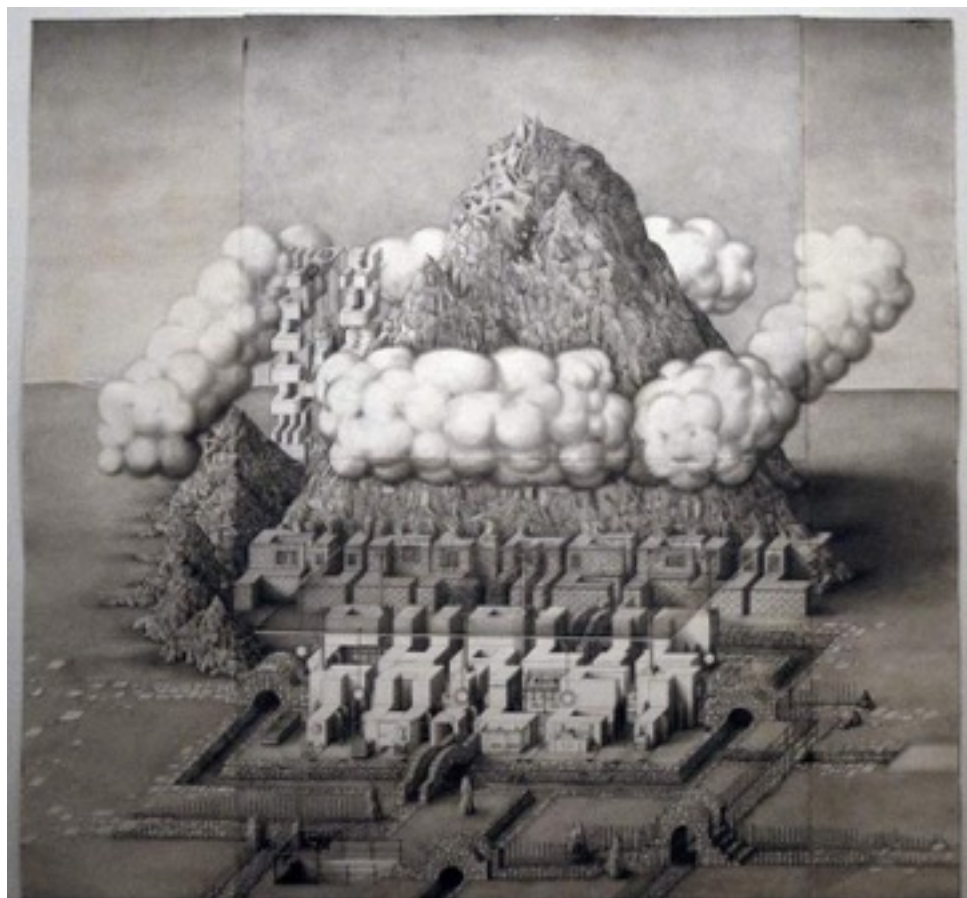




Emma Talbot From the series 'Pictures from my Heart' 2009 - 10



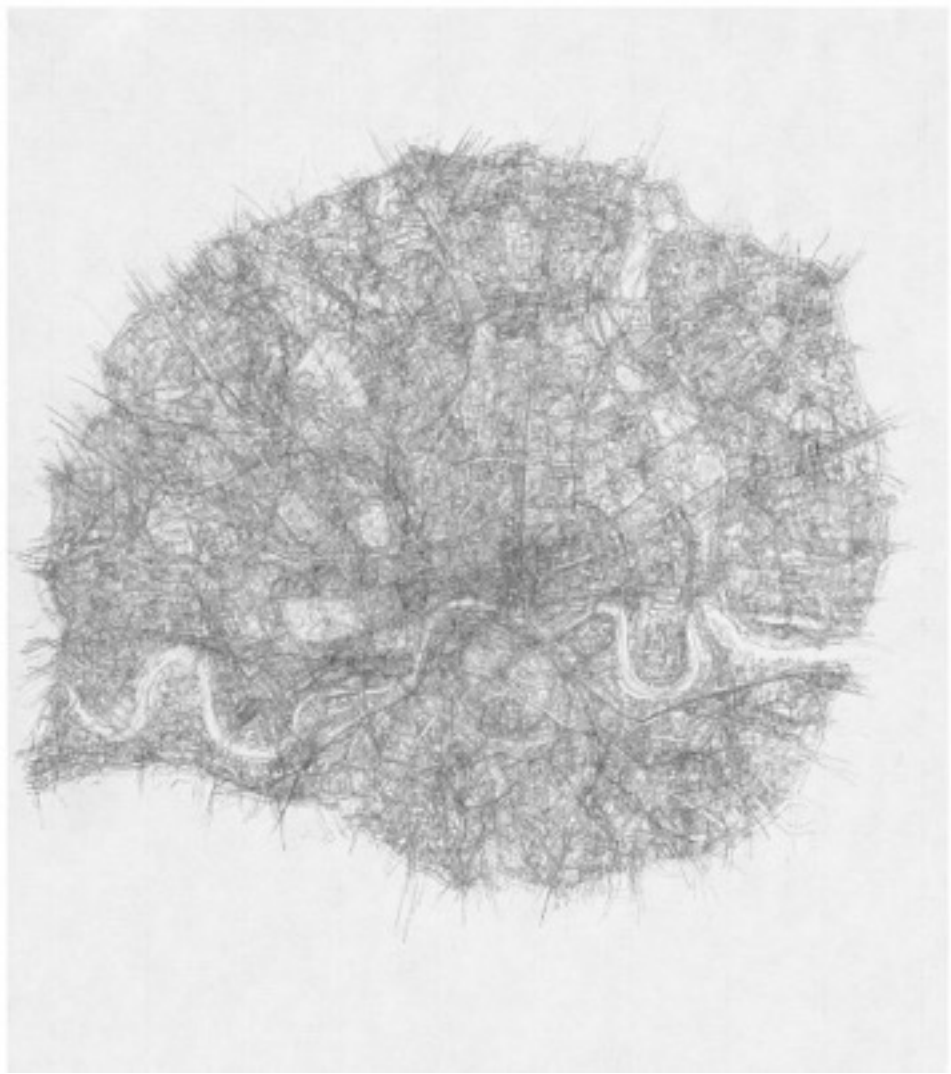
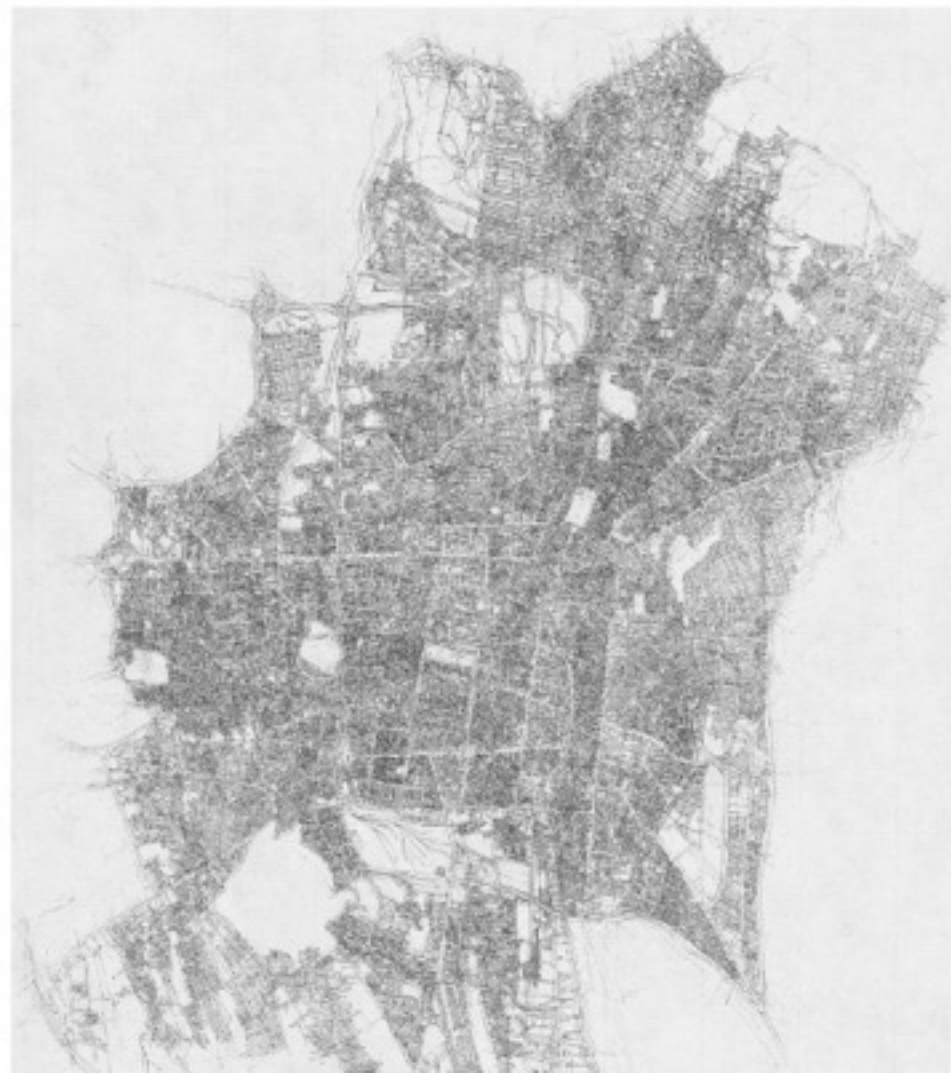
Kevin Connor, 'Coffee Bar, Melbourne' 1999, Sketchbook 68



Paul Noble ,  
'Public Toilet' 1999  
Pencil on paper



Paul Noble, 'Nobson Central', 1998-99, 300 x 400cm, pencil on paper



Kathy Prendergast, 'City Drawings Series' - Teheran and London, 1997